

Short-term Acute Care Hospital PEPPER
1-Day Stays for Surgical DRGs
123456

Table 52 Hospital Statistics for 1-Day Stays for Surgical DRGs

Time Period	Outlier Status	Percent (Numerator / Denominator)	Target Area Discharge Count (Numerator)	Denominator Count	Target Area Average Length of Stay (ALOS)	Denominator Average Length of Stay (ALOS)	Target Average Medicare Payment	Target Sum Medicare Payment
Q3 FY 2023	Not an outlier	15.5%	43	277	1.0	5.5	\$24,869	\$1,069,353
Q4 FY 2023	Not an outlier	14.7%	40	272	1.0	5.6	\$24,902	\$996,088
Q1 FY 2024	Not an outlier	13.0%	32	246	1.0	5.3	\$24,798	\$793,534
Q2 FY 2024	Not an outlier	14.1%	39	276	1.0	6.3	\$27,289	\$1,064,263
Q3 FY 2024	Not an outlier	17.4%	46	265	1.0	5.6	\$24,801	\$1,140,831
Q4 FY 2024	High Outlier	33.0%	91	276	1.0	5.0	\$29,820	\$2,713,580
Q1 FY 2025	High Outlier	24.7%	73	296	1.0	4.9	\$30,133	\$2,199,701
Q2 FY 2025	High Outlier	28.7%	75	261	1.0	4.7	\$28,377	\$2,128,285
Q3 FY 2025	High Outlier	24.9%	79	317	1.0	4.4	\$27,606	\$2,180,871

Note: Data for hospitals with fewer than 11 discharges in the numerator of a target area have been suppressed due to confidentiality requirements.

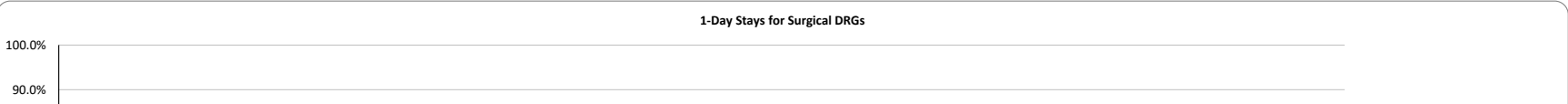
SUGGESTED INTERVENTION FOR HIGH OUTLIERS

This could indicate unnecessary admissions related to the inappropriate use of admission screening criteria or outpatient observation. A sample of medical records with one-day length of stay should be reviewed to determine whether inpatient admission was necessary or if care could have been provided more efficiently on an outpatient basis (e.g., outpatient observation). Hospitals may generate data profiles to identify one-day stays sorted by DRG, physician, or admission source to assist in the identification of any patterns related to increasing one-day stays. Hospitals may also wish to identify whether patients admitted for one-day stays were treated in outpatient, outpatient observation, or the emergency department for one or more nights prior to the inpatient admission. Hospitals should not review one-day stays that are associated with procedures designated by CMS as “inpatient only.”

Table 53 Comparative Data for 1-Day Stays for Surgical DRGs

Time Period	National 80th Percentile	Jurisdiction 80th Percentile	State 80th Percentile	Percent (Numerator / Denominator)
Q3 FY 2023	22.2%	20.2%	17.1%	15.5%
Q4 FY 2023	21.6%	21.4%	16.9%	14.7%
Q1 FY 2024	21.5%	24.1%	17.8%	13.0%
Q2 FY 2024	21.3%	24.1%	17.0%	14.1%
Q3 FY 2024	22.3%	22.3%	17.7%	17.4%
Q4 FY 2024	22.0%	21.9%	21.4%	33.0%
Q1 FY 2025	21.7%	21.9%	18.4%	24.7%
Q2 FY 2025	21.6%	21.6%	17.3%	28.7%
Q3 FY 2025	22.0%	19.5%	17.0%	24.9%

Note: Comparative data were calculated using percentages from PPS hospitals in each comparison group. Jurisdiction/State percentiles for a target area are not calculated if there are fewer than 11 hospitals with reportable data for the target area in a Jurisdiction/State. #N/A indicates insufficient data to calculate the percentile.



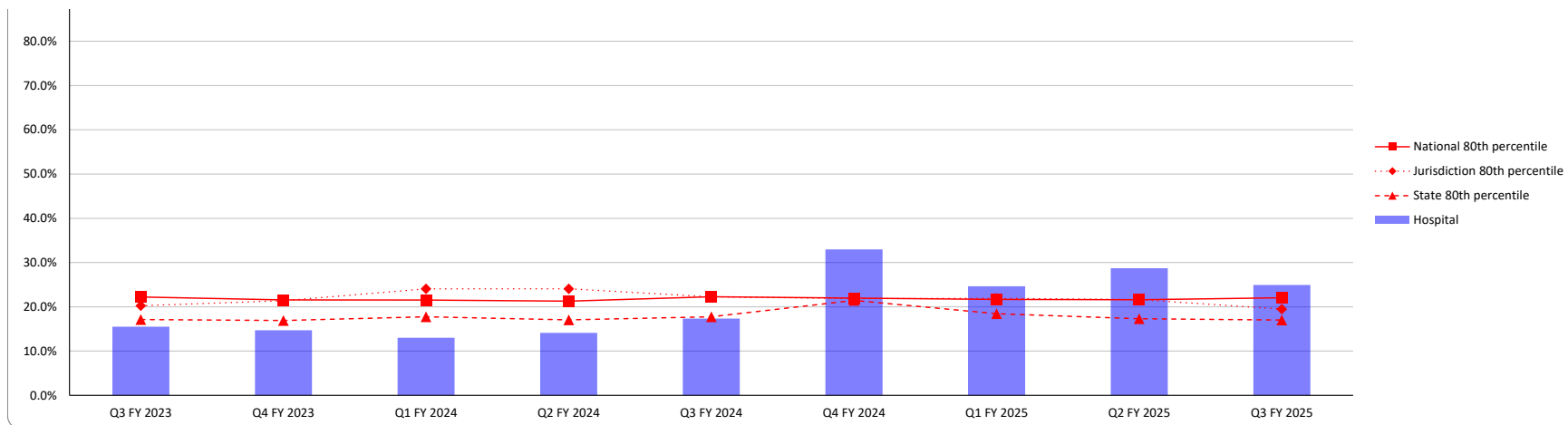


Table 54 Hospital Top Surgical DRGs

DRG	Description	Same- and 1-Day Stay Count*	Total Discharges for DRG*	Proportion of Same- and 1-Day Stays to Total Discharges for DRG	Hospital Average Length of Stay for DRG
267	ENDOVASCULAR CARDIAC VALVE REPLACEMENT AND SUPPLEMENT PROCEDURES WITHOUT MCC	51	73	69.9%	1.5
274	PERCUTANEOUS AND OTHER INTRACARDIAC PROCEDURES WITHOUT MCC	32	41	78.0%	1.6
322	PERCUTANEOUS CARDIOVASCULAR PROCEDURES WITH INTRALUMINAL DEVICE WITHOUT MCC	13	44	29.5%	1.9
Top Surgical DRGs		96	158	60.8%	1.6
All Surgical DRGs		318	1,150	14.8%	5.7

*Excludes discharges with the following discharge status code: 02, 07, 20, 82 and excludes claims with occurrence span code 72 with "through" date on or day prior to inpatient admission.

Note: This table displays the top 20 ranked DRGs for which there are at least 11 total same- and one-day stays during the most recent four fiscal quarters. If multiple DRGs share the same rank, all tied DRGs will be displayed.

Table 55 Jurisdiction Top Surgical DRGs

DRG	Description	Same- and 1-Day Stay Count*	Total Discharges for DRG*	Proportion of Same- and 1-Day Stays to Total Discharges for DRG	Hospital Average Length of Stay for DRG
274	PERCUTANEOUS AND OTHER INTRACARDIAC PROCEDURES WITHOUT MCC	2,163	2,995	72.2%	1.7
267	ENDOVASCULAR CARDIAC VALVE REPLACEMENT AND SUPPLEMENT PROCEDURES WITHOUT MCC	885	1,799	49.2%	2.1

470	MAJOR HIP AND KNEE JOINT REPLACEMENT OR REATTACHMENT OF LOWER EXTREMITY WITHOUT MCC	556	2,245	24.8%	3.0
468	REVISION OF HIP OR KNEE REPLACEMENT WITHOUT CC/MCC	390	589	66.2%	1.8
39	EXTRACRANIAL PROCEDURES WITHOUT CC/MCC	380	516	73.6%	1.6
322	PERCUTANEOUS CARDIOVASCULAR PROCEDURES WITH INTRALUMINAL DEVICE WITHOUT MCC	331	2,147	15.4%	2.8
36	CAROTID ARTERY STENT PROCEDURES WITHOUT CC/MCC	289	402	71.9%	1.5
266	ENDOVASCULAR CARDIAC VALVE REPLACEMENT AND SUPPLEMENT PROCEDURES WITH MCC	281	942	29.8%	5.1
269	AORTIC AND HEART ASSIST PROCEDURES EXCEPT PULSATION BALLOON WITHOUT MCC	280	491	57.0%	2.4
483	MAJOR JOINT OR LIMB REATTACHMENT PROCEDURES OF UPPER EXTREMITIES	232	689	33.7%	3.4
467	REVISION OF HIP OR KNEE REPLACEMENT WITH CC	209	854	24.5%	4.2
317	CONCOMITANT LEFT ATRIAL APPENDAGE CLOSURE AND CARDIAC ABLATION	158	203	77.8%	1.8
38	EXTRACRANIAL PROCEDURES WITH CC	152	364	41.8%	2.9
472	CERVICAL SPINAL FUSION WITH CC	152	674	22.6%	3.9
473	CERVICAL SPINAL FUSION WITHOUT CC/MCC	140	283	49.5%	2.2
27	CRANIOTOMY AND ENDOVASCULAR INTRACRANIAL PROCEDURES WITHOUT CC/MCC	139	232	59.9%	1.9
35	CAROTID ARTERY STENT PROCEDURES WITH CC	131	296	44.3%	2.9
661	KIDNEY AND URETER PROCEDURES FOR NON-NEOPLASM WITHOUT CC/MCC	119	516	23.1%	2.4
331	MAJOR SMALL AND LARGE BOWEL PROCEDURES WITHOUT CC/MCC	115	768	15.0%	3.2
402	SINGLE LEVEL COMBINED ANTERIOR AND POSTERIOR SPINAL FUSION EXCEPT CERVICAL	97	525	18.5%	3.1
489	KNEE PROCEDURES WITHOUT PRINCIPAL DIAGNOSIS OF INFECTION WITHOUT CC/MCC	94	110	85.5%	1.3
Top Surgical DRGs		7,293	17,640	41.3%	2.7
All Surgical DRGs		11,005	79,545	13.8%	6.1

*Excludes discharges with the following discharge status code: 02, 07, 20, 82 and excludes claims with occurrence span code 72 with "through" date on or day prior to inpatient admission.

Note: This table displays the top 20 ranked DRGs for which there are at least 11 total same- and one-day stays during the most recent four fiscal quarters. If multiple DRGs share the same rank, all tied DRGs will be displayed.